

# **Korniche Bi-folding Door**

## Installation Guide

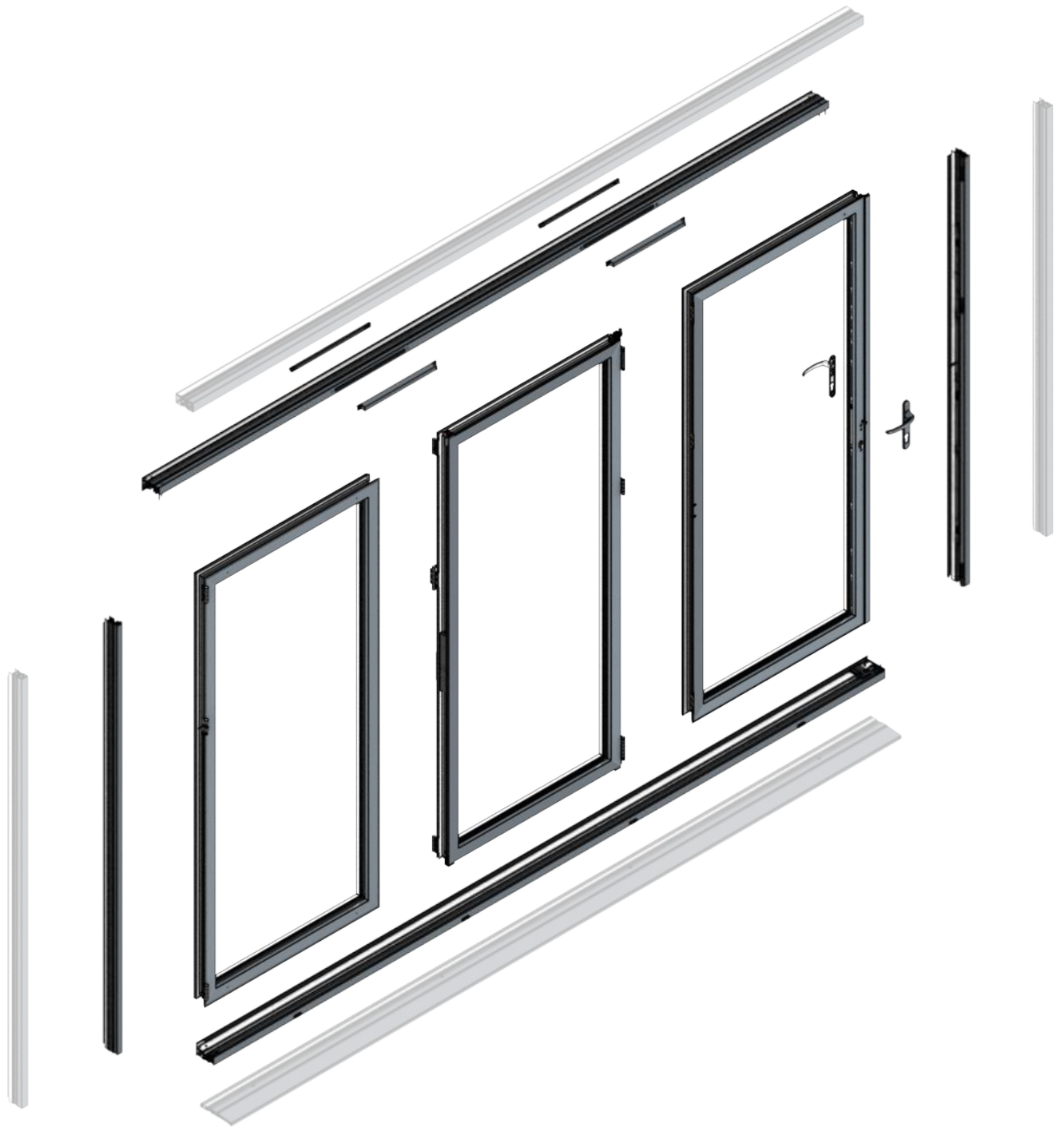
**Kit-form assembly**  
Stages 1-2



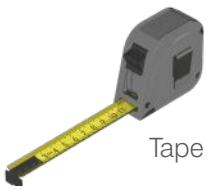
**Door installation**  
Stage 3-8

**Lock adjustment**  
Appendix 1

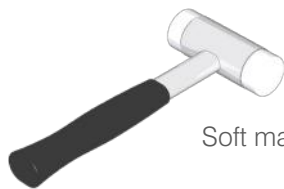
**De-glazing instruction**  
Appendix 2



## TOOLS REQUIRED



Tape measure



Soft mallet



Spirit level



4mm hex key



Glazing paddle



Glazing suction lifters



Cordless  
drill / driver

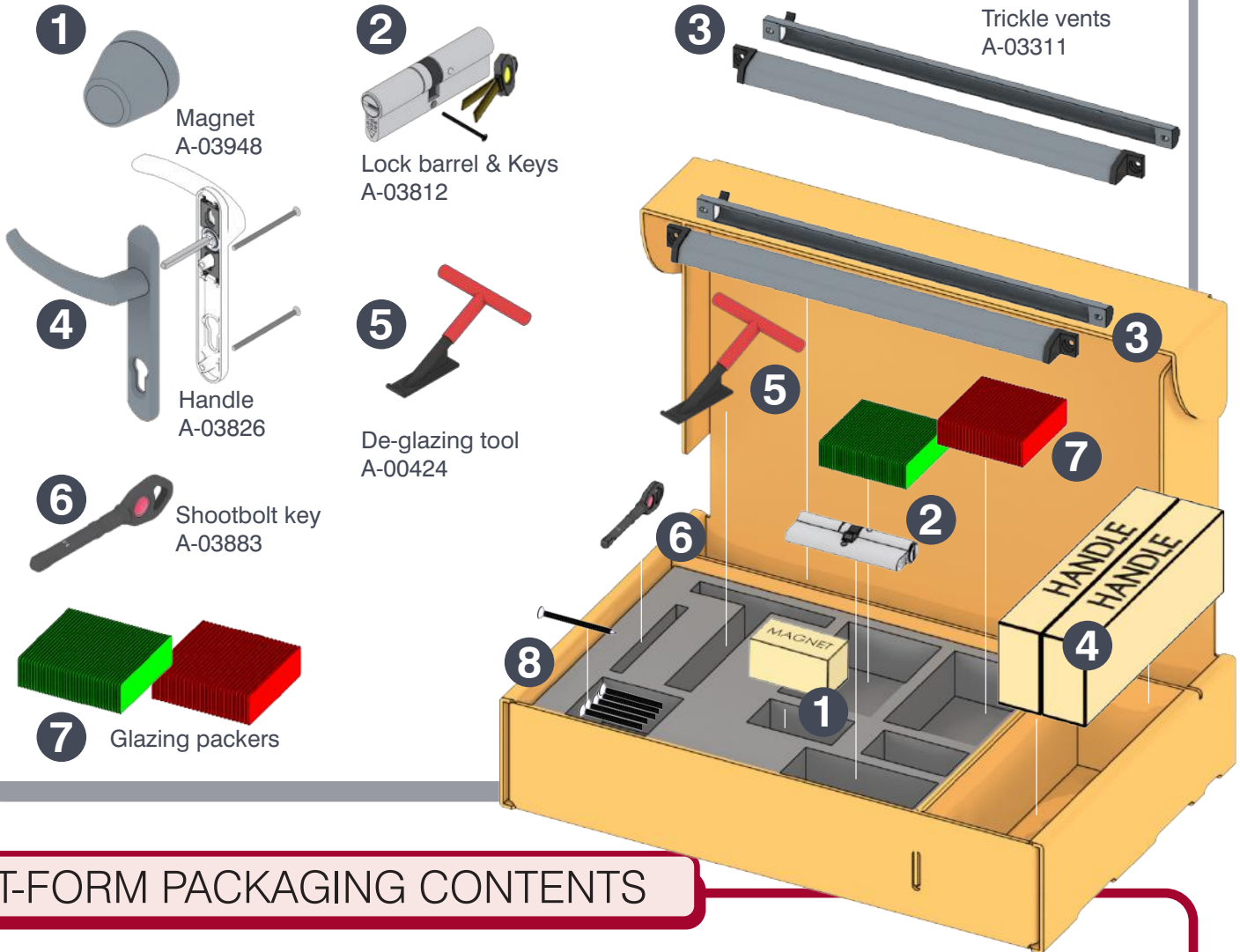


Pozi No 2  
Bit



3 & 5mm  
Drill Bits

# PACKAGING CONTENTS



**1**  
Magnet  
A-03948

**2**  
Lock barrel & Keys  
A-03812

**3**  
Trickle vents  
A-03311

**4**  
Handle  
A-03826

**5**  
De-glazing tool  
A-00424

**6**  
Shootbolt key  
A-03883

**7**  
Glazing packers

**8**

# KIT-FORM PACKAGING CONTENTS

**8**  
4.2 x 32 Pozi CSK self  
drilling screw  
A-03732

4.2x19 POZI CSK Self  
drilling screw  
A-03309

4.8x60 Pozi CSK  
A-03310

**KF** Denotes kit-form parts only

M5x10 POZI CSK  
A-03735

# CONSUMABLES - NOT SUPPLIED

**SILICONE**  
Low modulus  
silicone sealant

Outer frame  
packers

Frame fixing  
screws

# KIT-FORM ONLY ASSEMBLY

KF

1



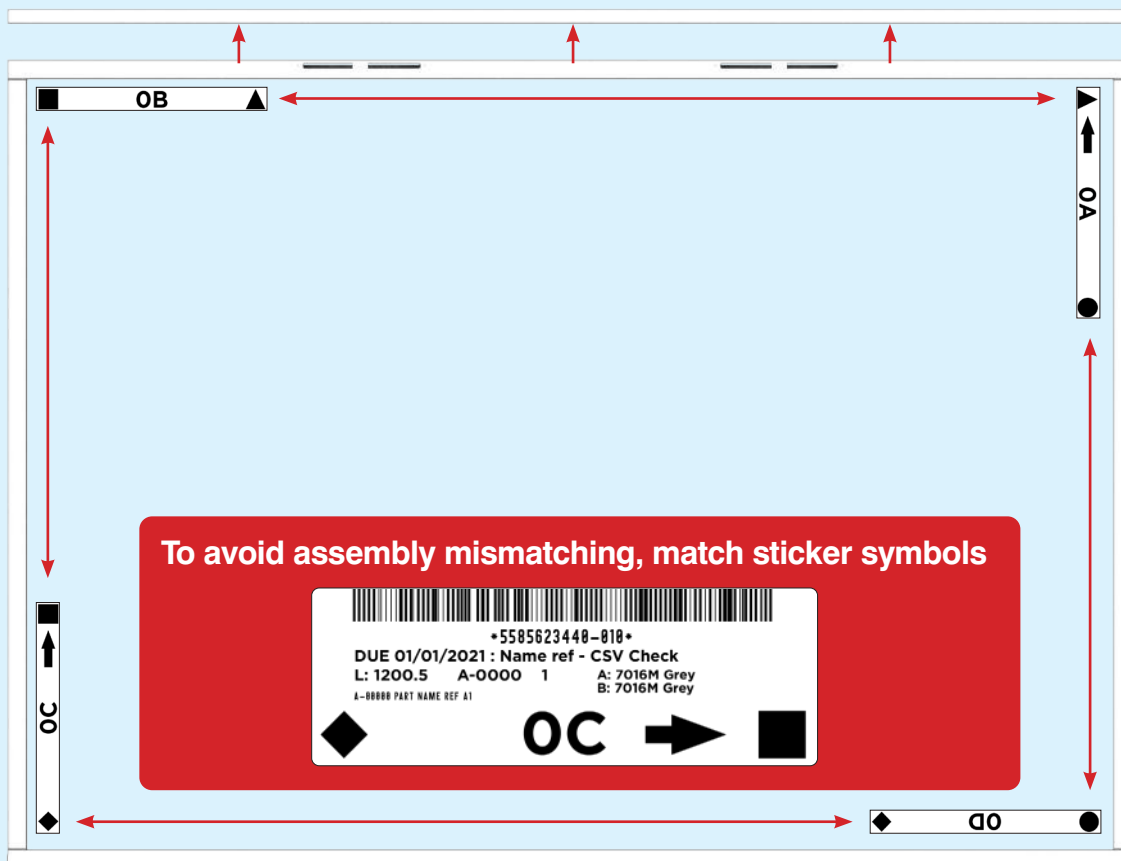
A-03310



1

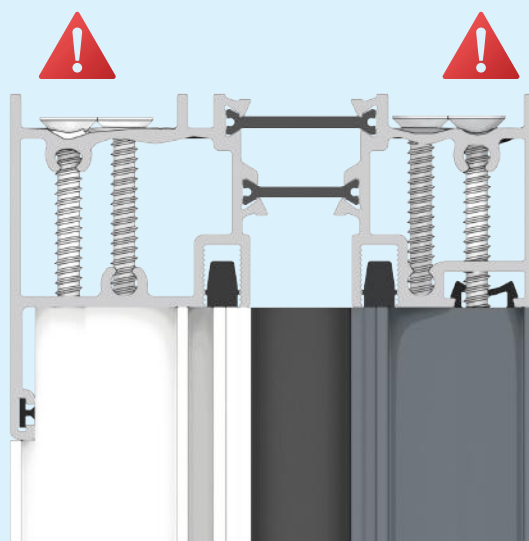
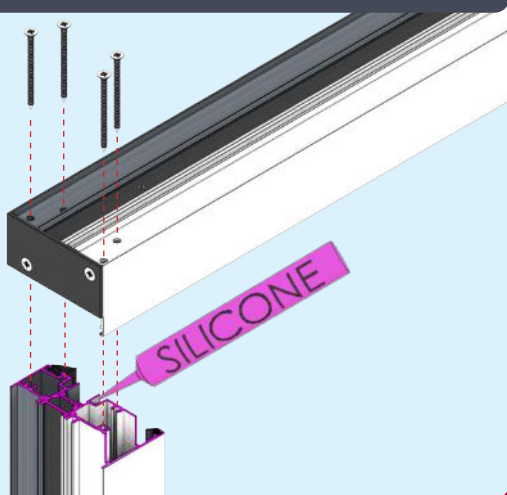


Remove any frame extenders, retaining screws



To avoid assembly mismatching, match sticker symbols

2 Outerframe fixing



To avoid distortion do not over-tighten

# OUTERFRAME ASSEMBLY

KF

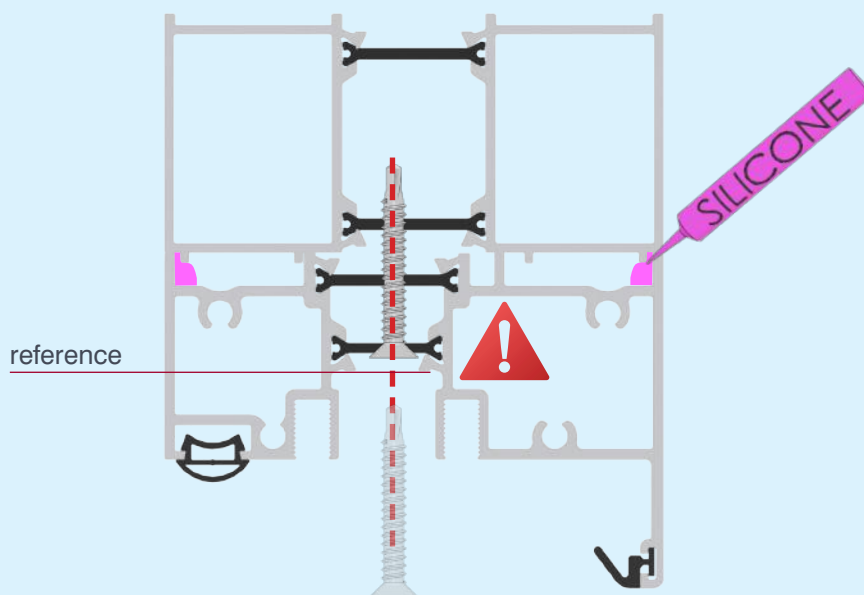


32mm 1:1

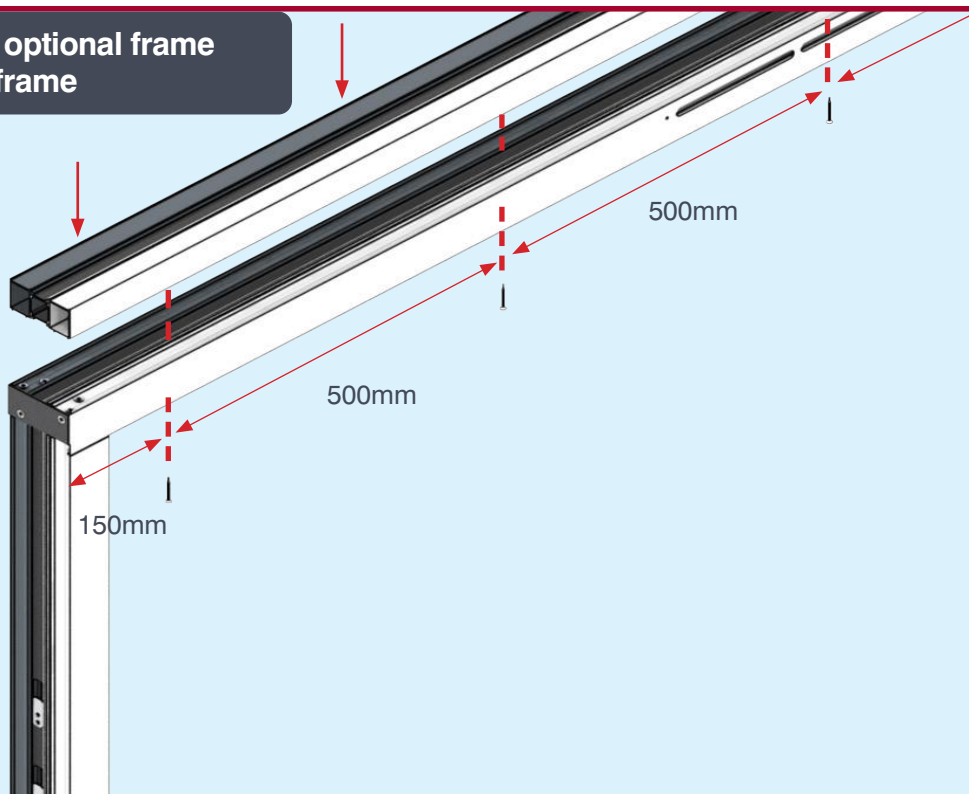
A-3732



## 3 Re-attach optional frame extender



## 4 Fixing position of optional frame extender to outerframe



Ensure screws are sub-flush to reference line

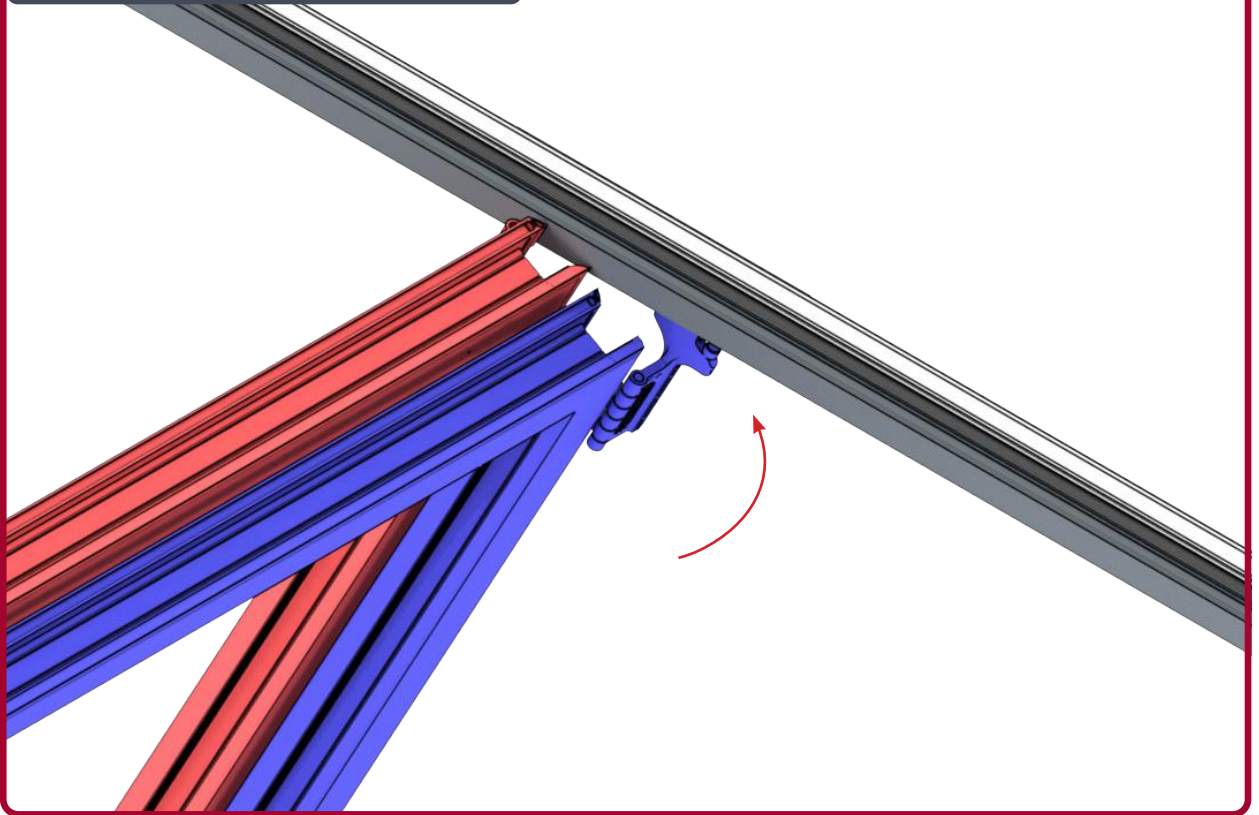
# SASH INSTALLATION

KF

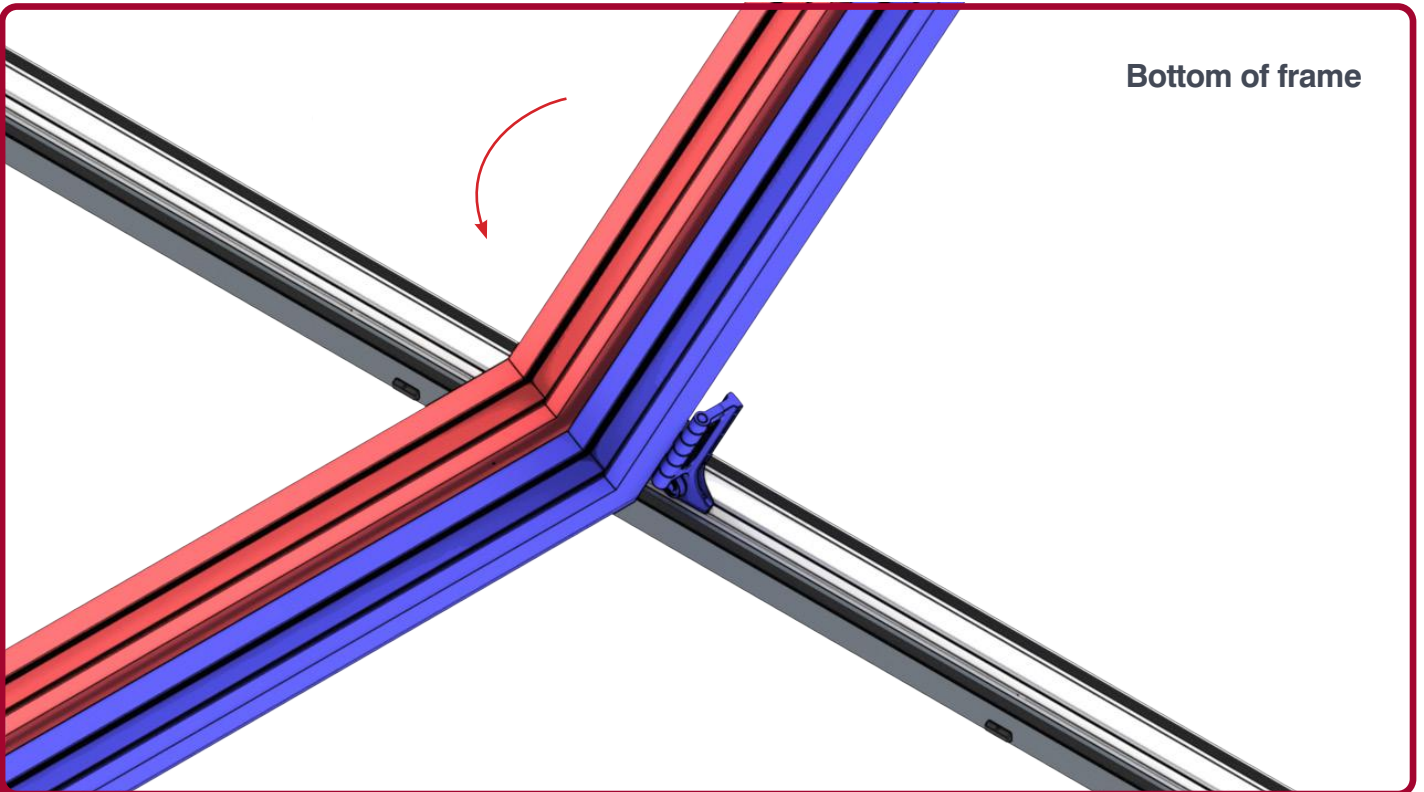
2

Rotate sash into position

Top of frame

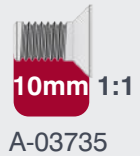


Bottom of frame



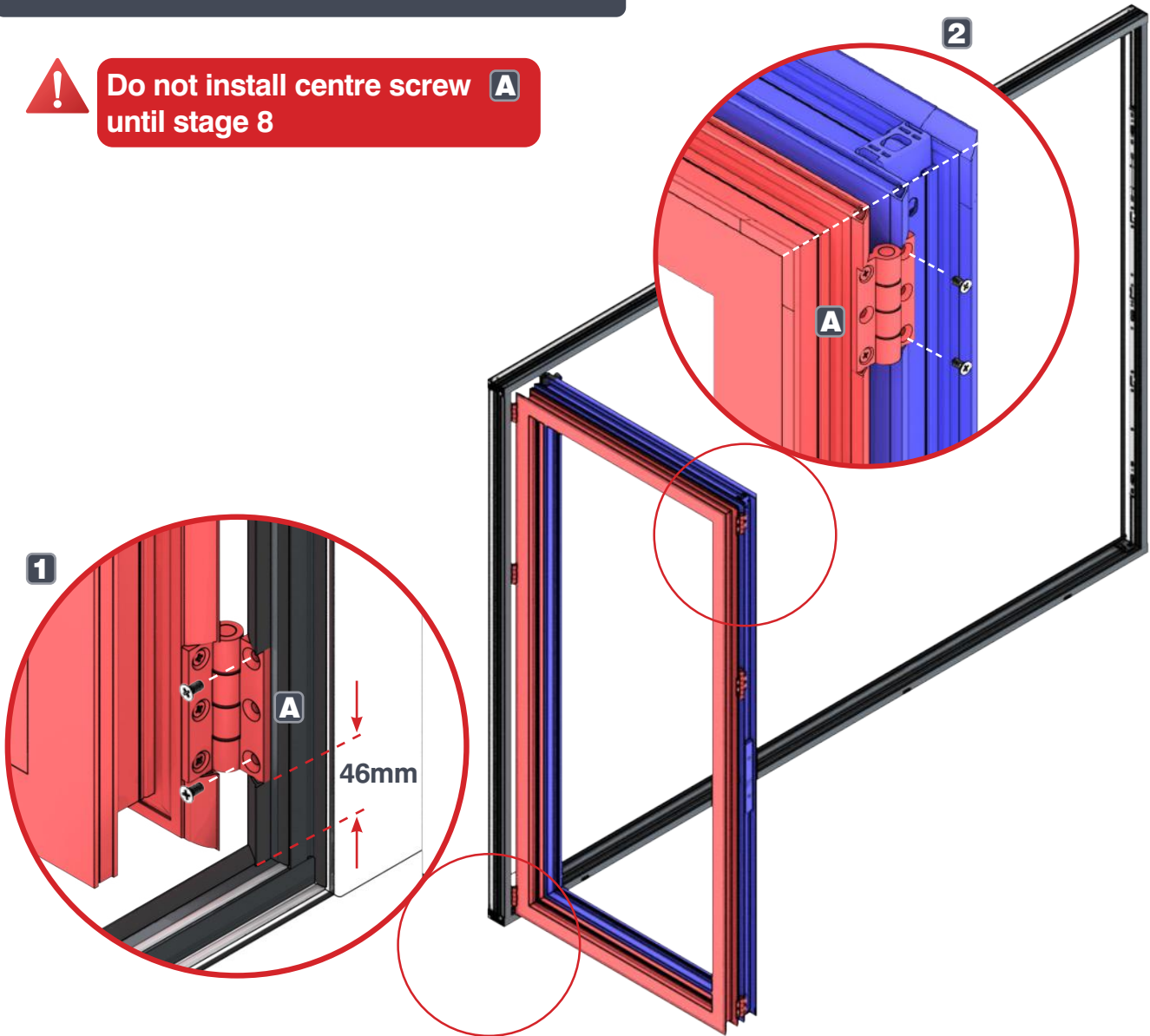
# SASH INSTALLATION

KF



## Sash attachment - external view

 Do not install centre screw **A** until stage 8



Align sashes using hinge screws to adjust heights (sashes are numbered left to right from outside)



End of Kit-form instructions

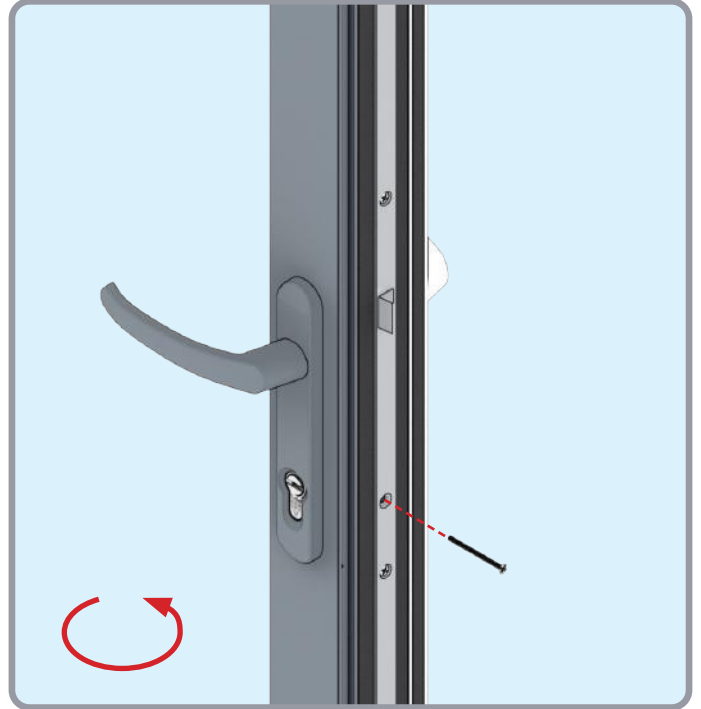
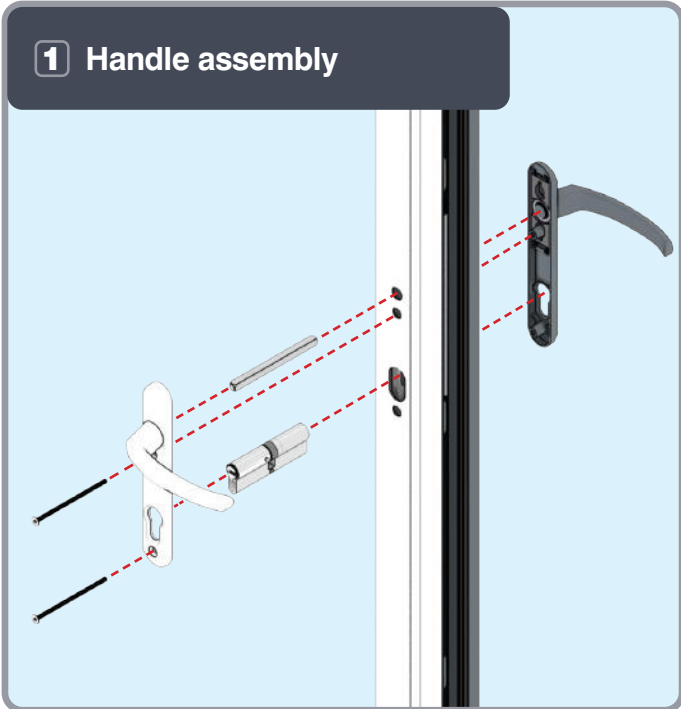
# GENERAL ASSEMBLY

## HANDLE INSTALLATION

3

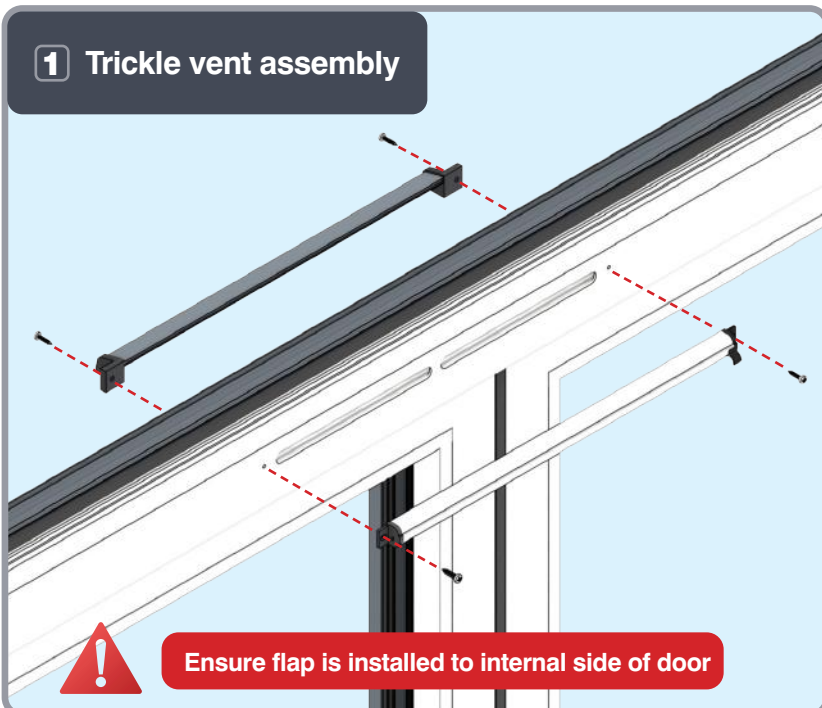


### 1 Handle assembly

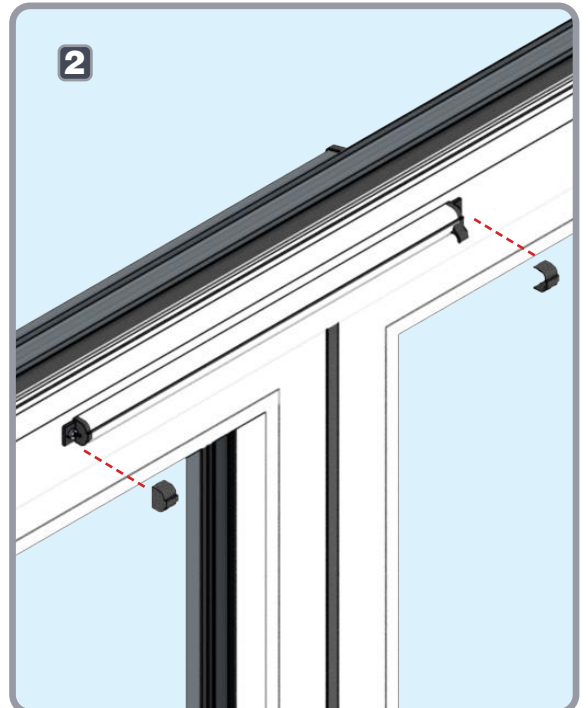


## OPTIONAL TRICKLE VENT INSTALLATION

### 1 Trickle vent assembly



2



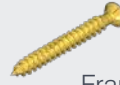


# CILL INSTALLATION

4



Outer frame packers  
(not supplied)

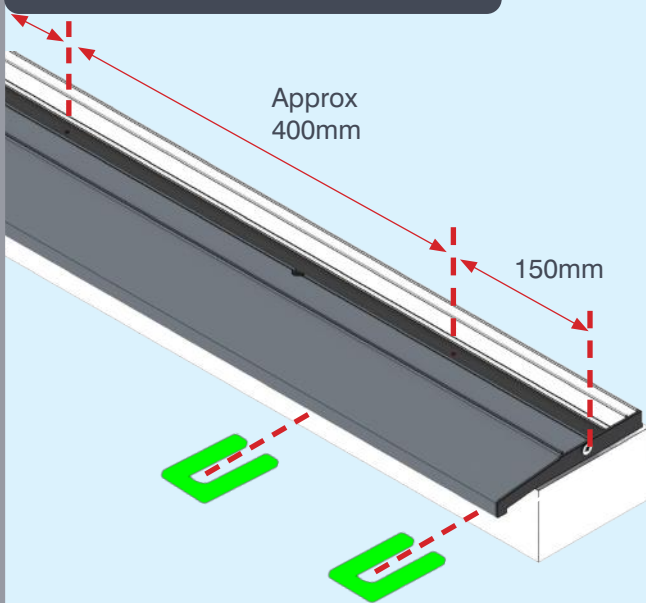


Frame fixing screws  
(not supplied)

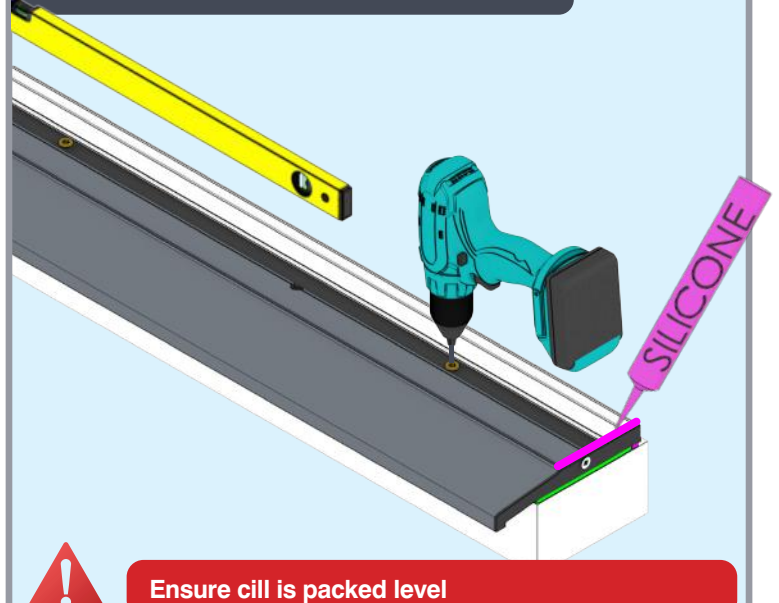


Low modulus silicone sealant  
(not supplied)

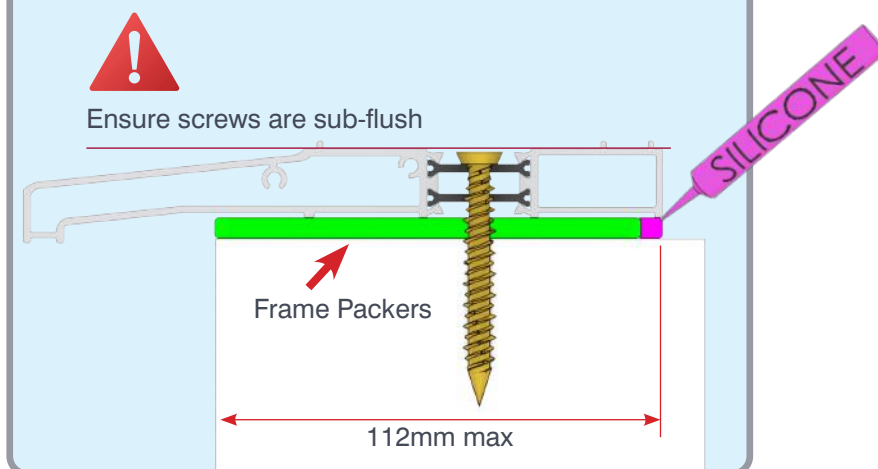
## 1 Drilling



## 2 Leveling and fixing cill



## 3 Completed cill position showing packer



**Note - Cill packers and screws are not supplied**

**Ensure cill is level:  $\pm 1$  mm**



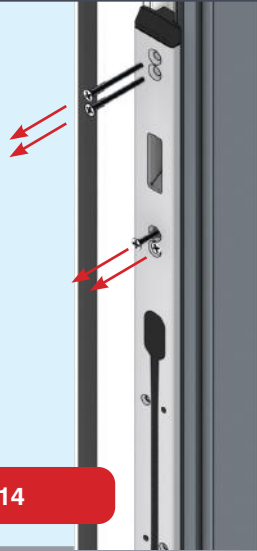
# DOOR INSTALLATION

## 5



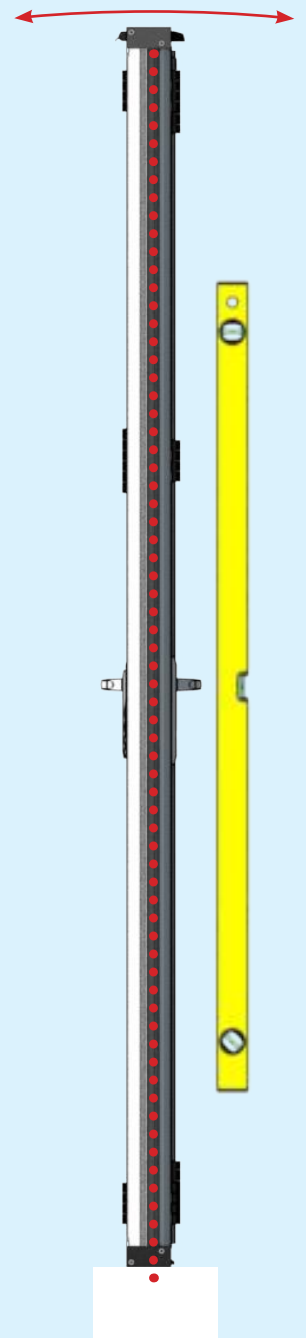
Only remove keep when on outerframe

1 Keep removal when on jamb

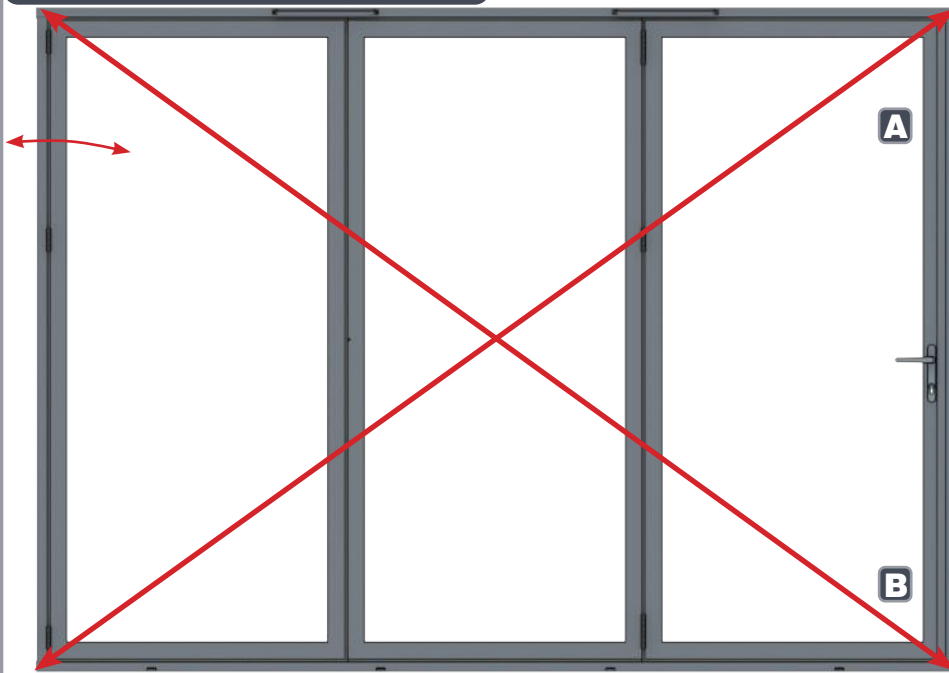


Retain fixing screws x14

2 Vertical Alignment



3 Horizontal alignment

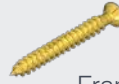


Ensure diagonals:  $A=B \pm 1\text{mm}$

# DOOR INSTALLATION



Outer frame packers  
(not supplied)

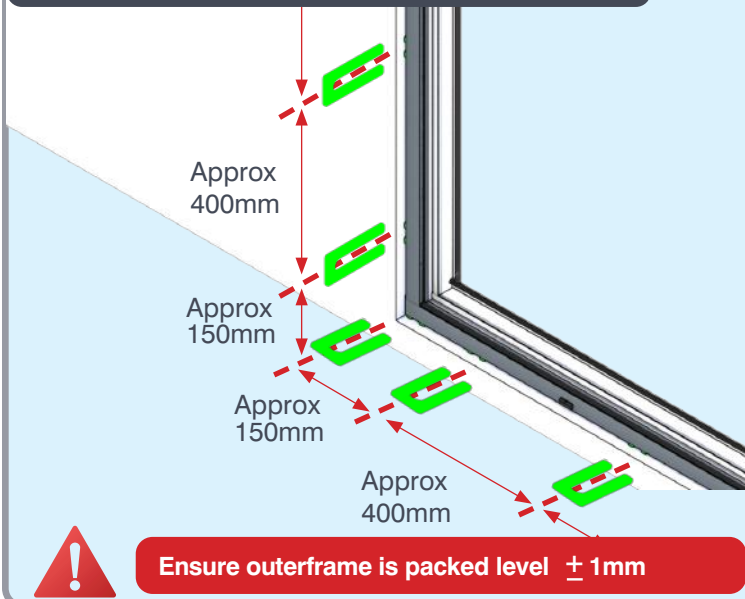


Frame fixing screws  
(not supplied)

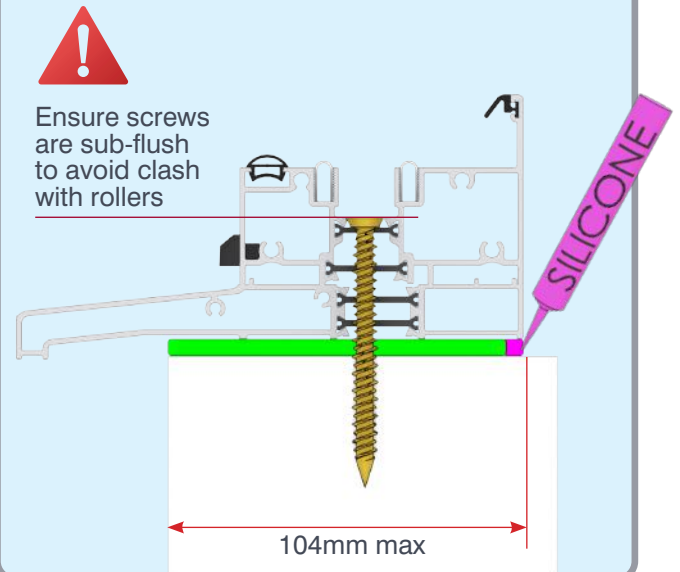


Low modulus silicone sealant  
(not supplied)

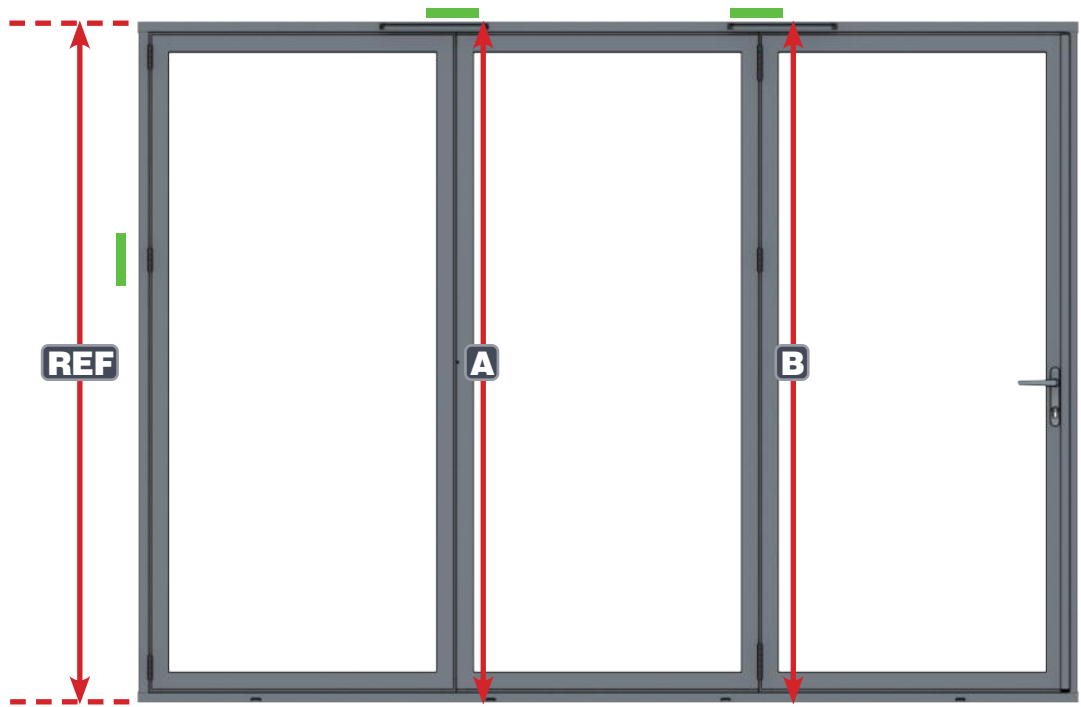
## 4 Packing of outerframe



## 5 Drill and screw outerframe in position



## 6 Check vertical measurements



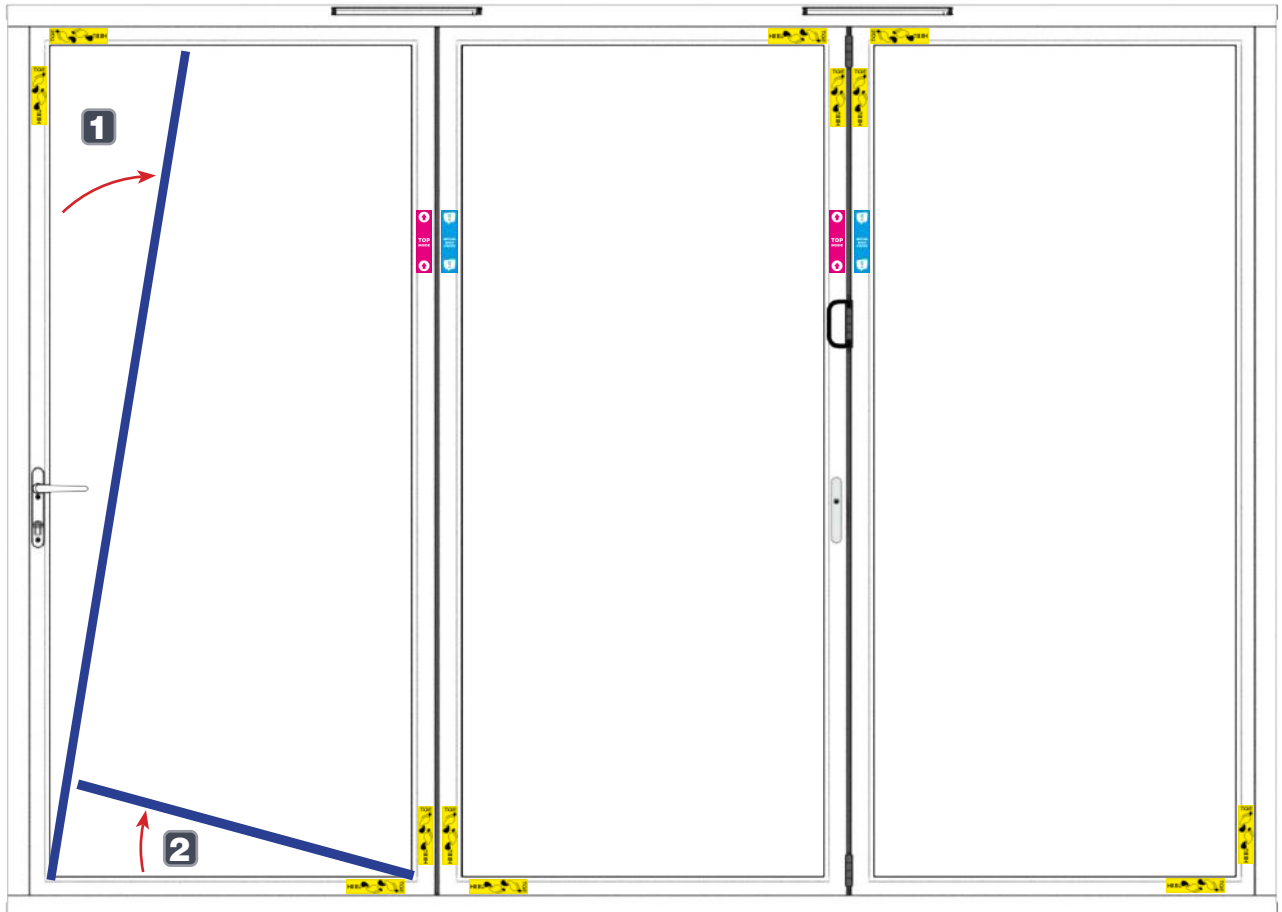
**Ensure verticals: REF=A=B ± 1mm**  
**Extra packers at locking points and hinges**



# DOOR GLAZING

## 6

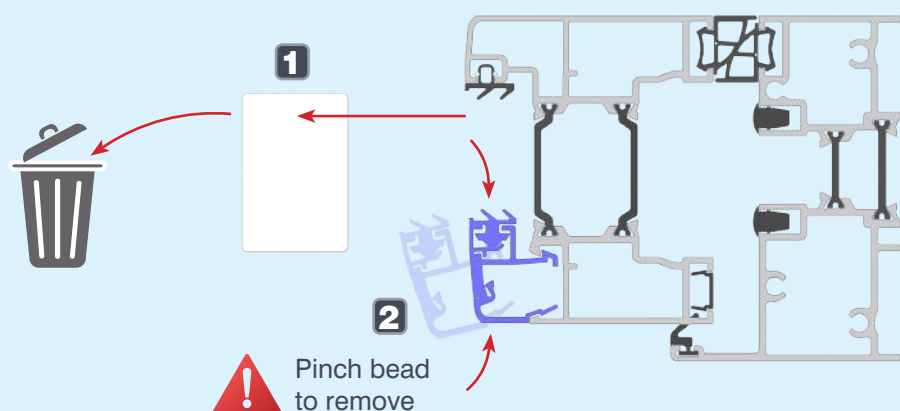
### 1 Bead and bead spacer removal for glazing



**Ensure beads return to original positions**

RETAIN  
BEAD  
ORDER

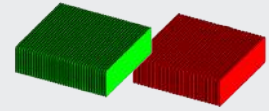
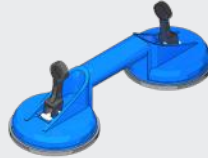
#### Polystyrene bead spacer removal



# DOOR GLAZING

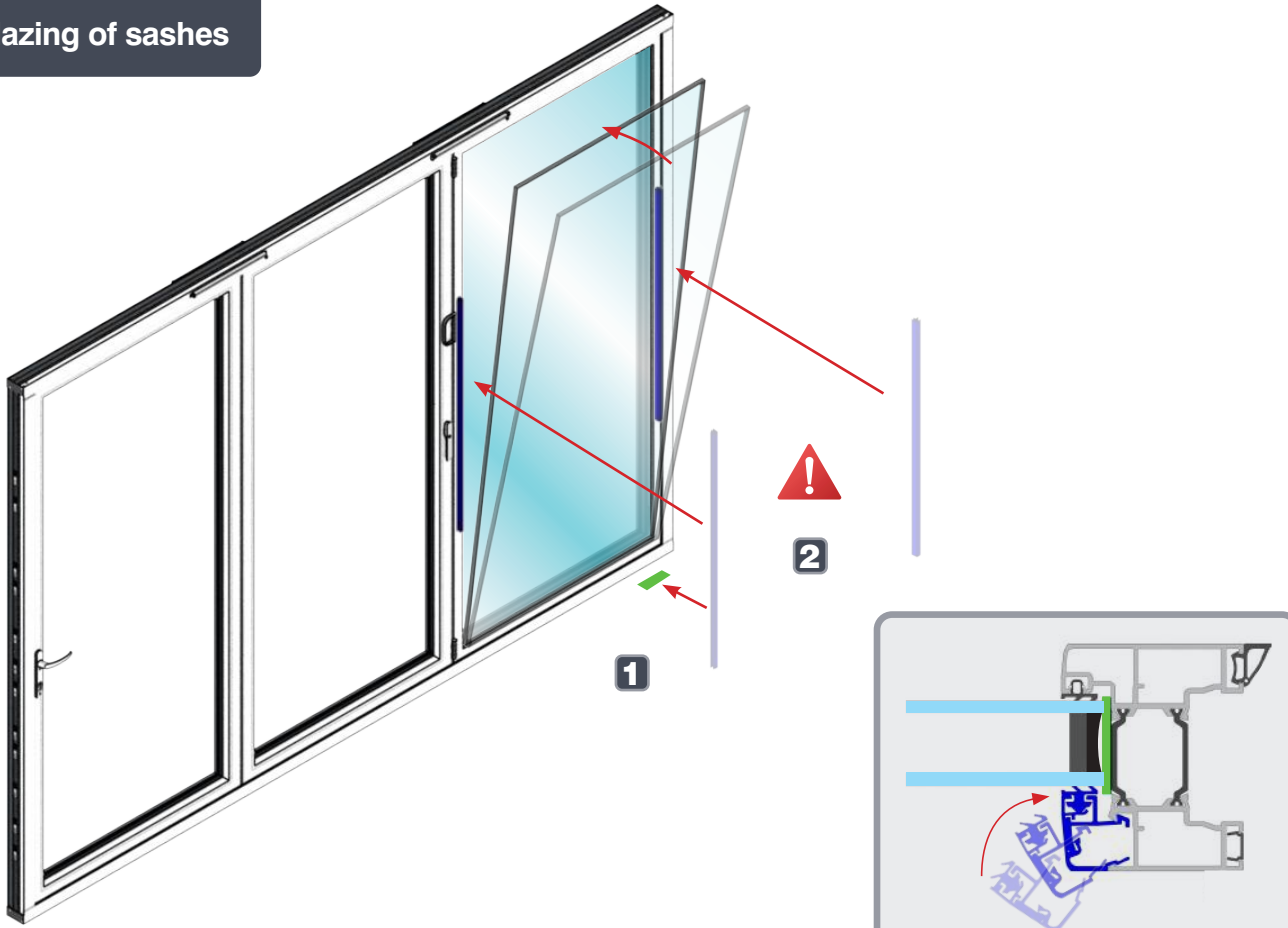


Horizontal beads



Glazing packers

## 2 Glazing of sashes

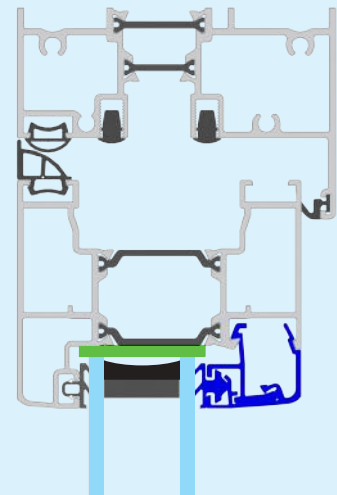


Tip: Use horizontal beads to temporarily secure glass: Refer to appendix 2

## Toe and heel adjustment



11mm



Adjust sash packing to maintain 11mm all round

# DOOR FUNCTIONALITY

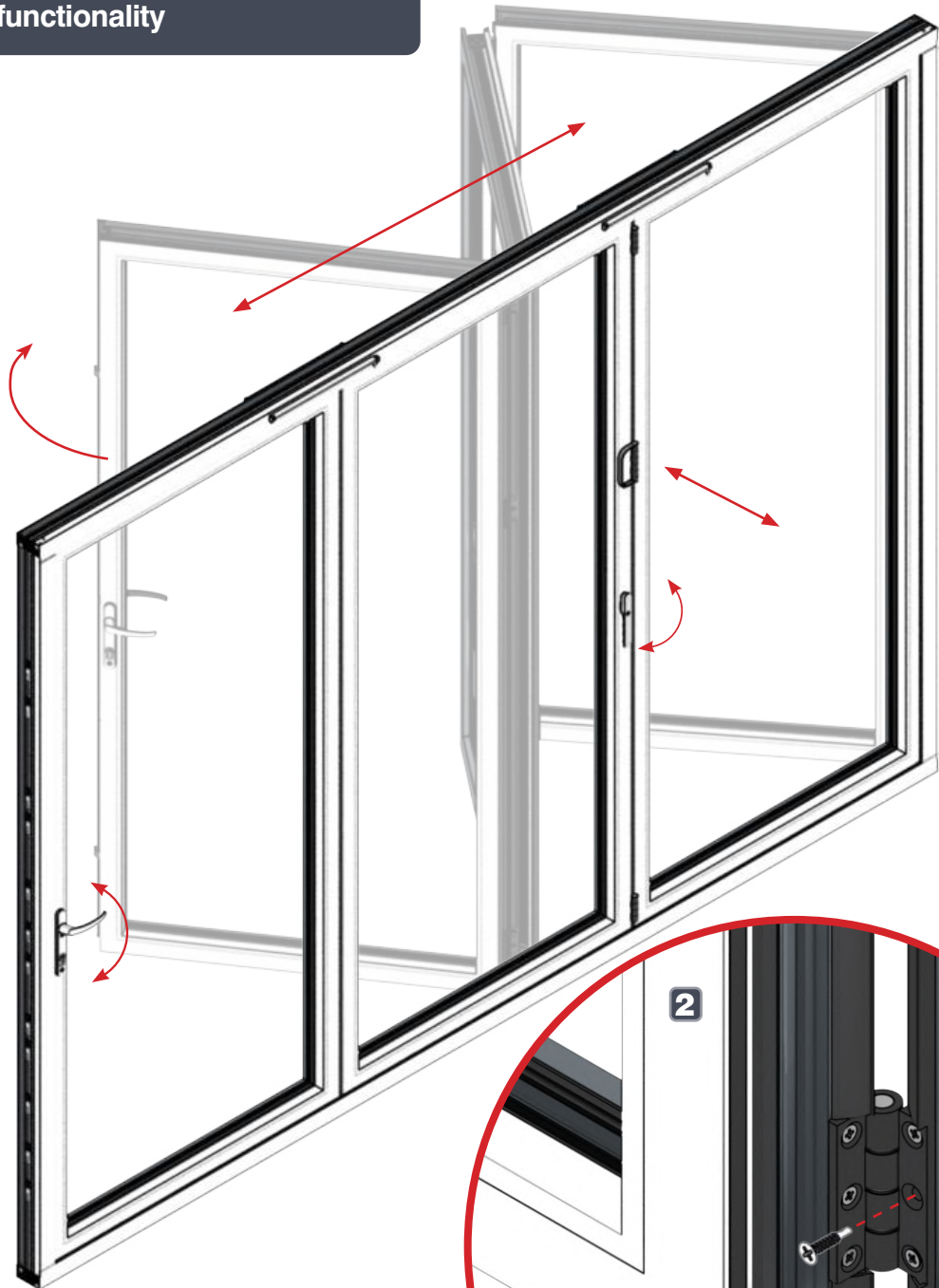
7

19mm 1:1

A-03309 -  
Final hinge screw

Shootbolt key  
A-03883

## 1 Check door functionality

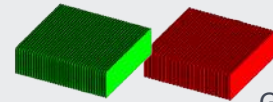


Adjust hinge height if required so sashes are inline and gaps are equal to 11mm then install final hinge screws

Final screw fixing

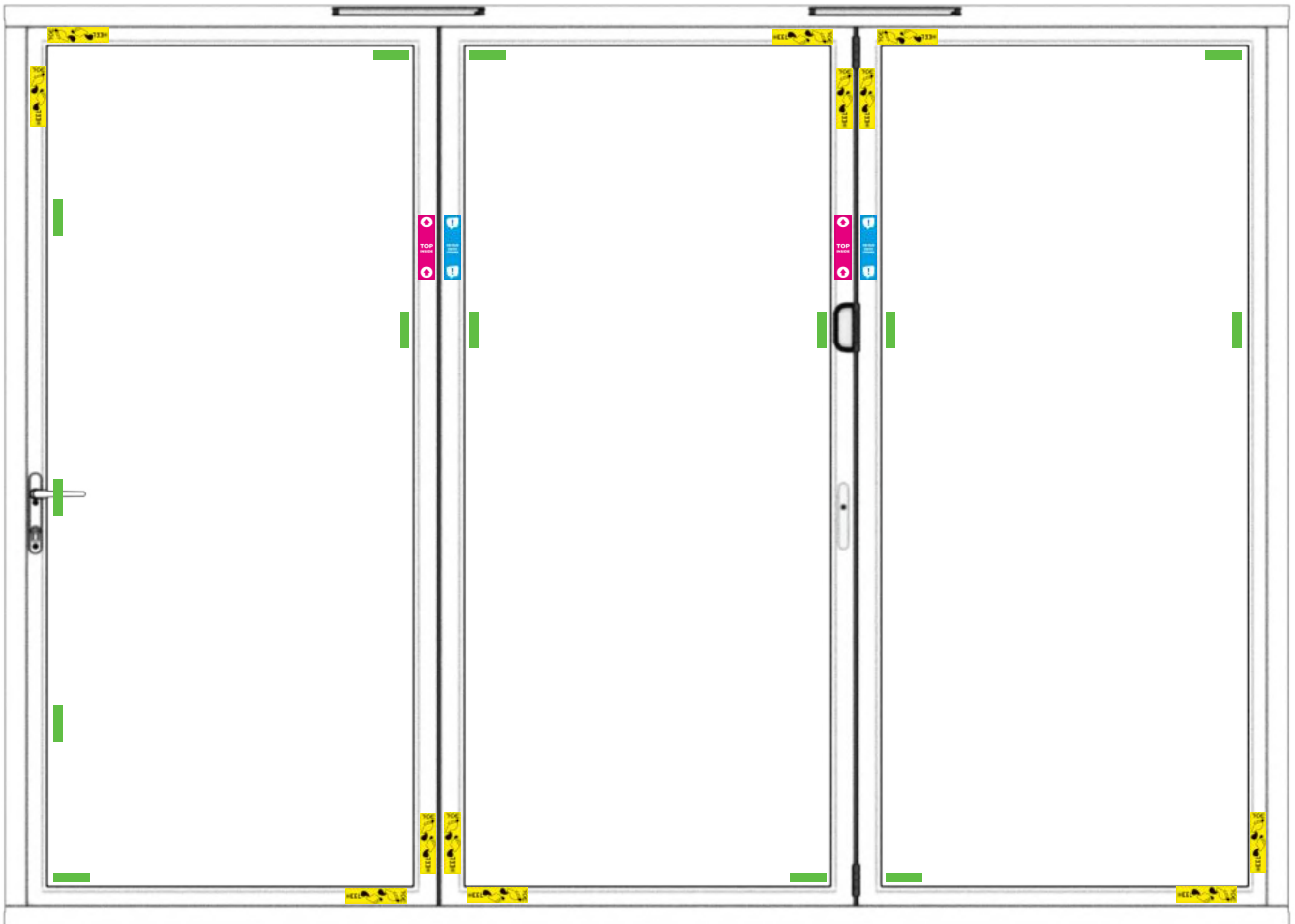


# ADDITIONAL PACKING AND REFITTING BEADS

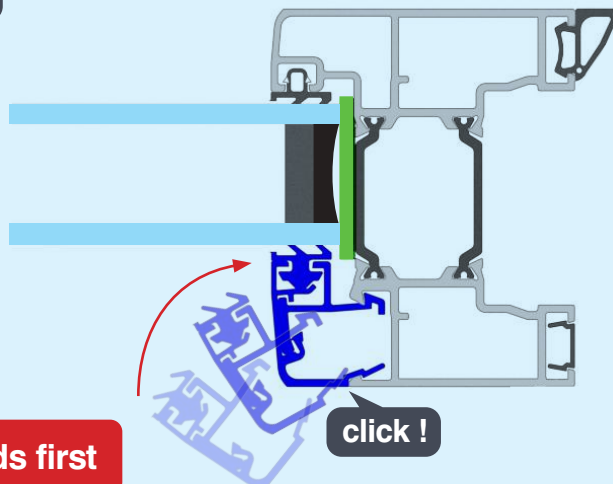


Glazing packers

## 3 Pack at locking and hinge points



## 4 Clip-in bead installation



**Fit horizontal beads first**

**click !**

# DOOR MAGNET INSTALLATION

8

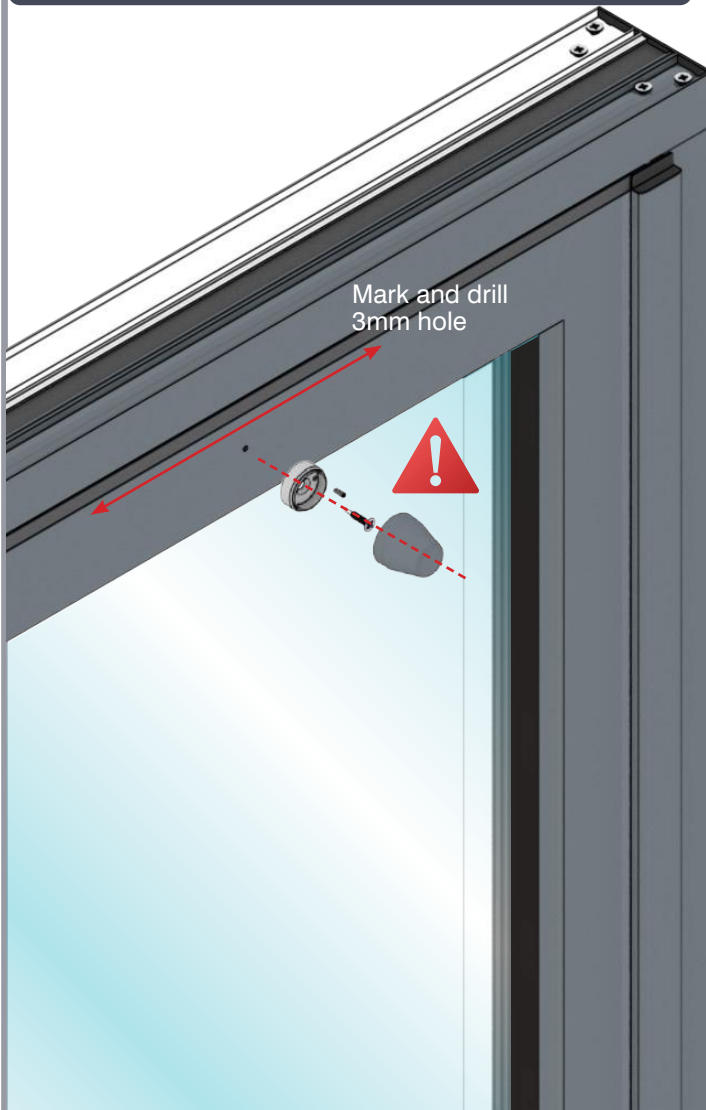


3mm Drill Bit



Magnet  
A-03948

## 2 Door magnet installation



Position grub screw opposite hinges  
and adjust angle to ensure magnets  
touching faces are parallel.



Position magnet ensuring  
10mm gap

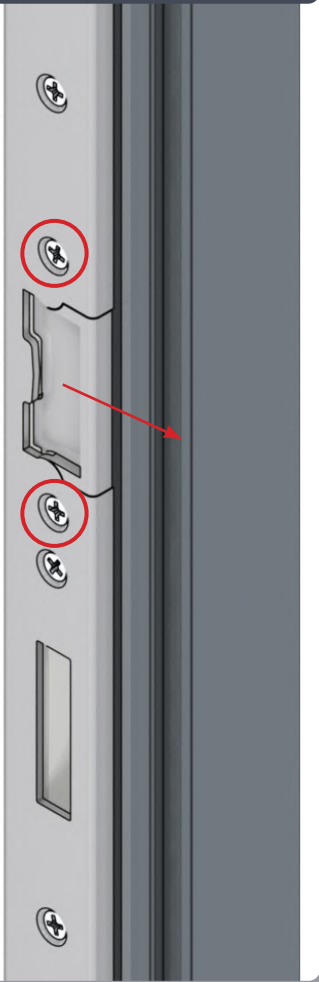


## Appendix 1: LOCK ADJUSTMENT

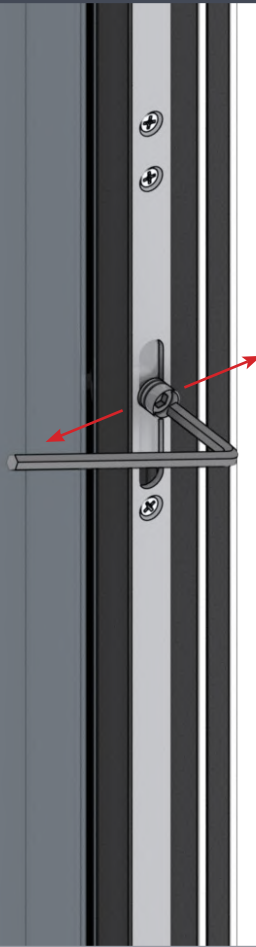


**Before adjusting lock ensure door frame and glazing is correctly packed**

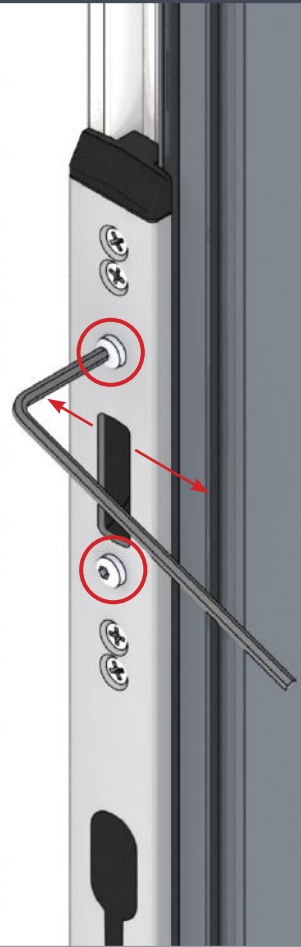
### 1 Latch plate adjustment



### 2 Roller cam adjustment using 4mm hex key



### 3 Hook keep adjustment using 4mm hex key



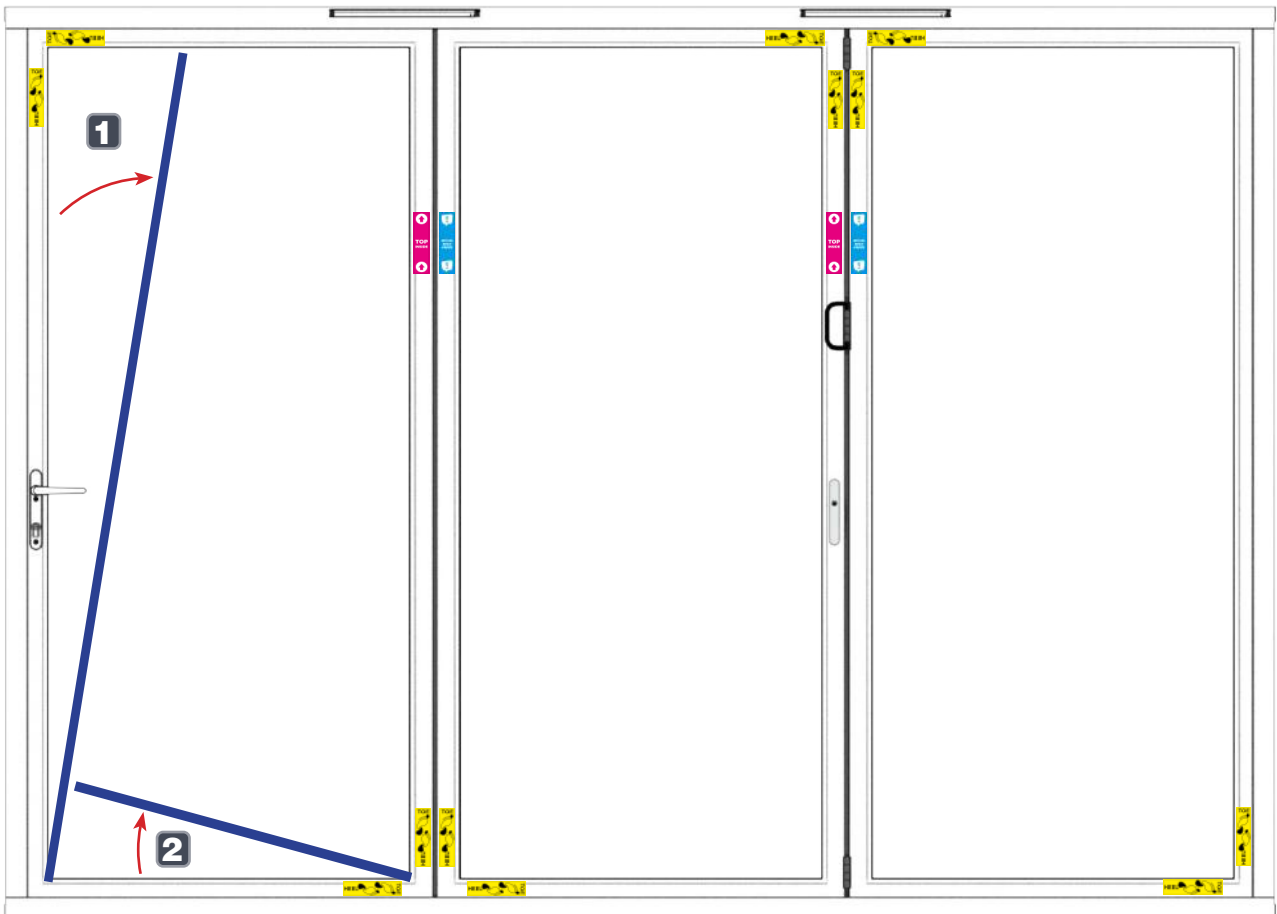
## Appendix 2: BEAD REMOVAL



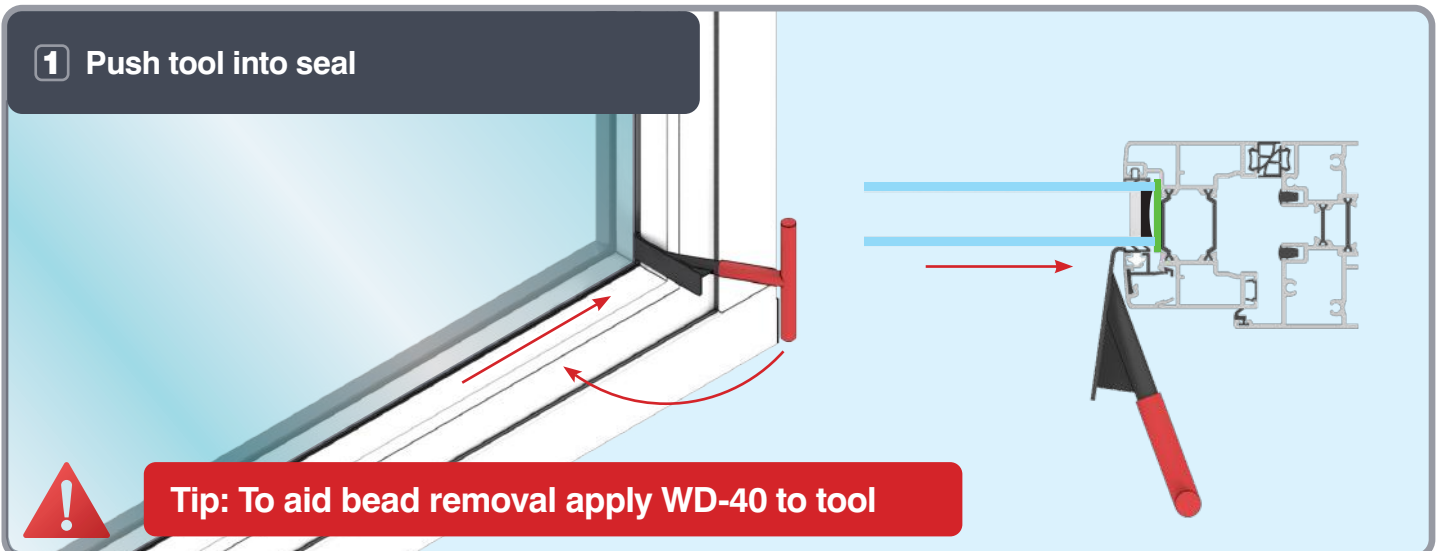
De-glazing tool  
A-00424

**!** Ensure tool and glass are clean to avoid scratches

### Bead removal order



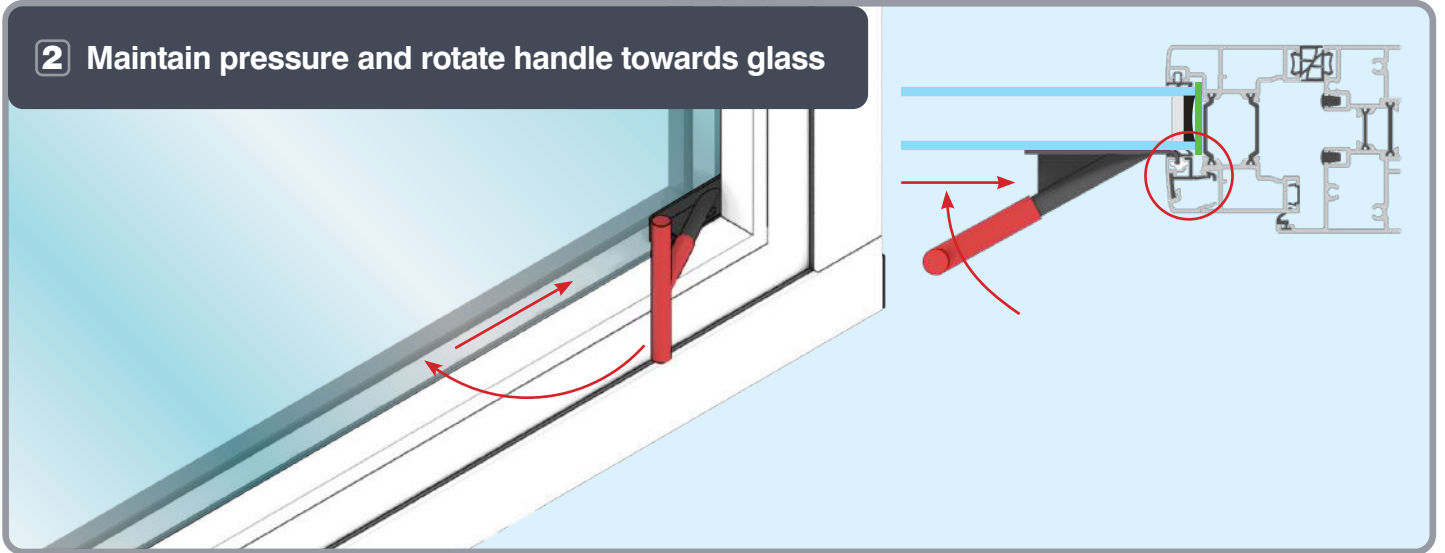
### 1 Push tool into seal



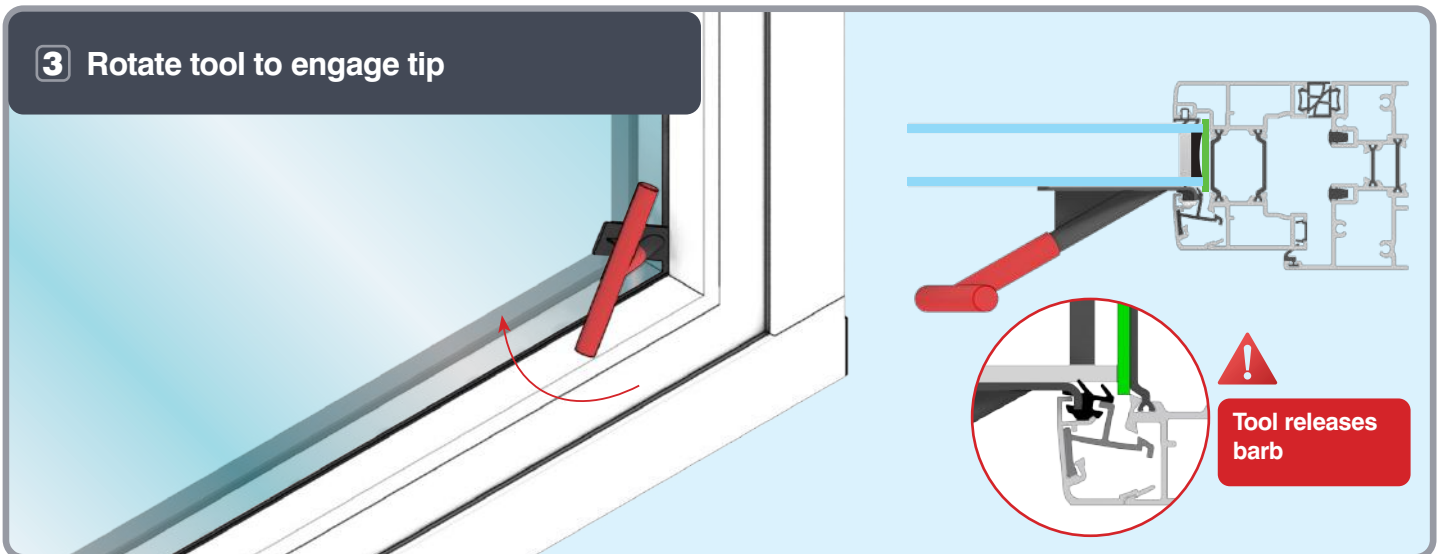
**!** Tip: To aid bead removal apply WD-40 to tool

## Appendix 2: BEAD REMOVAL

**2** Maintain pressure and rotate handle towards glass



**3** Rotate tool to engage tip



**4** Pull along the glass direction to release

